



Technology for **Life** 



OPERATION THEATRE
LIGHT
CATALOGUE

CE ISO9001/13485

About Us

SI Surgical Corporation, a Kolkata based company brings you medical equipments and hospital furnitures under the brand name SI Surgical.

As one of the most experienced and innovative manufacturing company in Kolkata, "SI Surgical Corporation" carrying a history of almost a decade of innovation, technology, manufacturing and marketing leadership in hospital furnitures and equipments. Today we are spending huge amount of scientific and creative energy on this aspect. SI Surgical Corporation is one such company which has followed the latest trend in medical equipments, furniture and is one step ahead in innovations, quality and services consciousness. The era started in the year 2000 by the name of SI Surgical and changed to SI Surgical Corporation when the company became export & import house.

Today SI Surgical is a full capacity provider of high quality hospital furnitures and equipments for hospital & nursing homes. Now in 2016 SI Surgical Corporation became "SI Surgical Pvt. Ltd"

To retain and reinforce our position as a known manufacturer of medical equipments, furniture and to meet the aspiration of our customers of the corporate world. We have an on line zero defect supply setup back supported by responsive service, empowered employees, vendor partners and a very satisfied customer based.

We the proud "SI Surgical Pvt. Ltd" family vow to strive vigorously to delight our customers who are very sophisticated, by pursuing excellence and innovation through committed team work. Initially we started with marketing of hospital furniture and medical equipments of different brands, but now we established our own brand SI Surgical.

We promise for continuous learning, achievement oriented and ethical business practices, which will make us shine in international level and served as a well known brand. We vow to remain a responsible corporate citizen contributing to the desired comfort level which is today's demand in the world

SI Surgical Pvt. Ltd has acquired ISO 9001:2015, 13485:2003 and for the design, research & development, manufacturer & supply hospital beds, operation theatre table, operation theatre lights, other medical equipments and instruments.



A POPULAR
BRAND
CREATED
SPECIALITY

CERTIFICATE



Hexa Series

The Hexa 36, model is innovative LED surgical lights manufacture SI Surgical. The Hexa 36, is Available in single colour temperature.

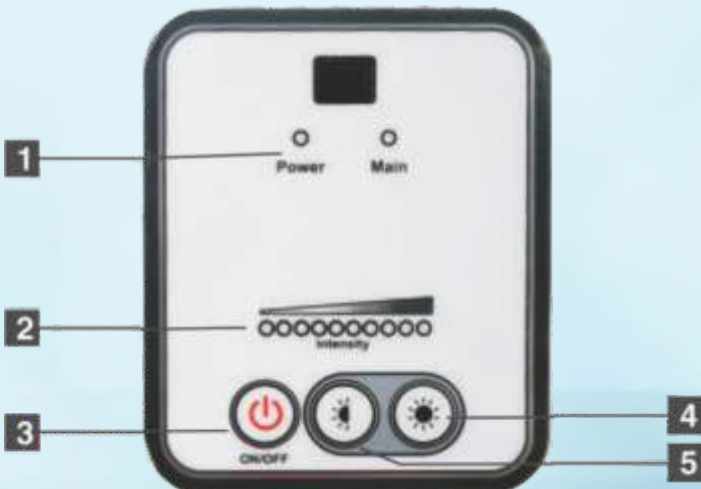
HEXA SERIES MODEL - HEXA 36

Digital Control Panel
To adjust the lux intensity

Suspension Arm
To fit any room configuration,
Experience full-range maneuverability

Sterilizable Handle
To move the dome in all
directions.

Led Light
Combination of Yellow & White
LED's for making natural day light



HEXA 36, HEXA 30 & HEXA 20 Control Keypad

1. Power Indication
2. Level of Brightness
3. ON/OFF
4. Lighting Level (UP)
5. Lighting Level (DOWN)

Minimum standard height 10ft

Hexa Series

Hexa 30D & Hexa 20D model is innovative LED surgical lights manufacture SI Surgical. Hexa 30D & Hexa 20D is Available in single colour temperature

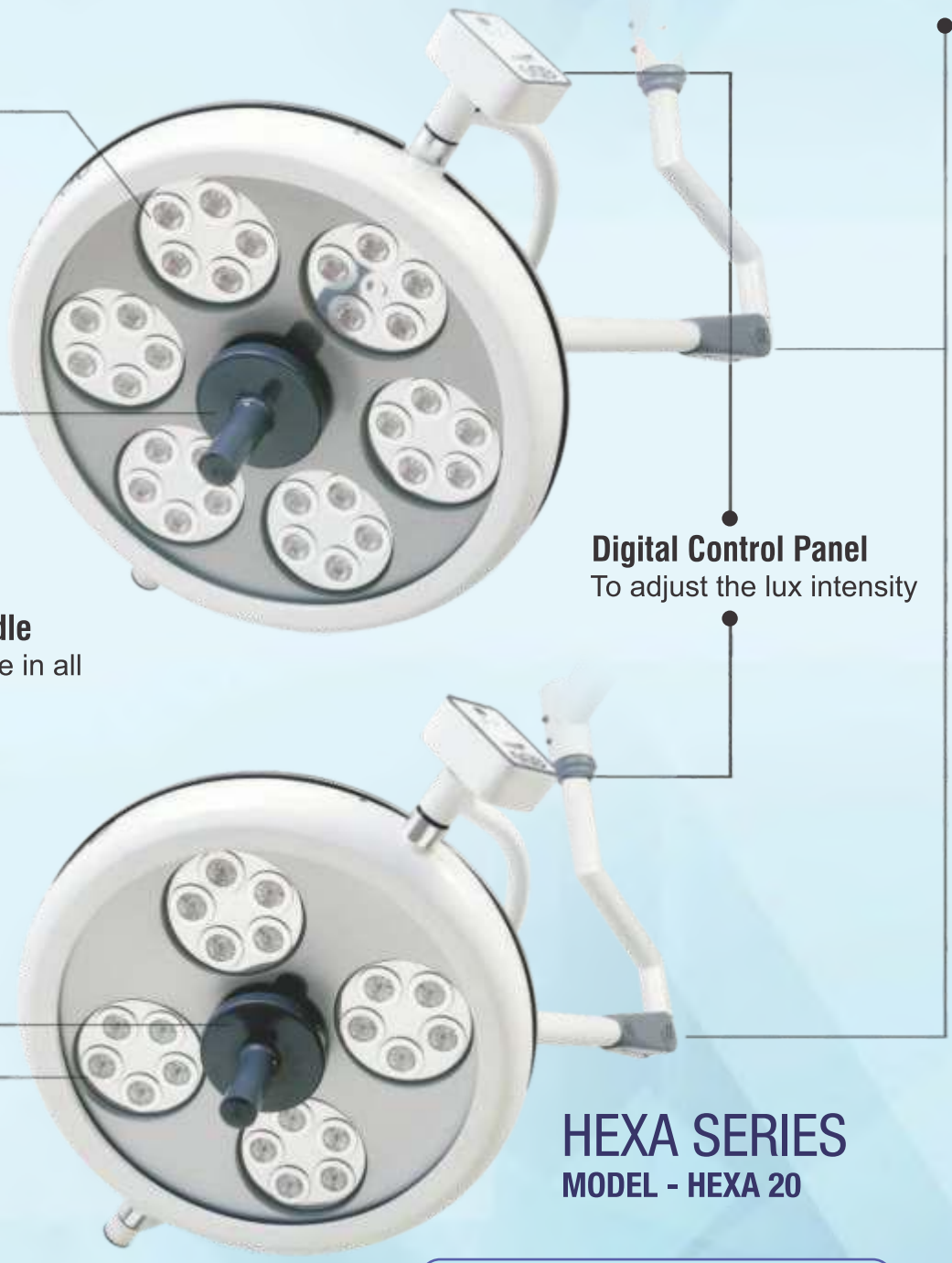
HEXA SERIES MODEL - HEXA 30

Suspension Arm
To fit any room configuration,
Experience full-range maneuverability

Led Light
Combination of Yellow &
White LED's for making
natural day light

Sterilizable Handle
To move the dome in all
directions.

Digital Control Panel
To adjust the lux intensity



HEXA SERIES MODEL - HEXA 20

Minimum standard height 10ft



Hexa Series

MODEL - HEXA 30D



MODEL - HEXA 30 + 20



MODEL - HEXA 20D



MODEL - HEXA 36D



MODEL - HEXA 30S



Technical Data

Model No.	Hexa 36D	Hexa 30S	Hexa 20D
Max Light Intensity at 1m(Lux)	160,000	160,000	120,000
No. of LED's	36	30	20
LED's Life Time	>40,000	>40,000	>40,000
Dome Diameter	580mm	600mm	580mm
Colour Rendering Index(RA)	>96	>96	>96
Temp. Increase @ Head Area	2C	2C	2C
Colour Temperature in Kelvin	4900K	4900K	4900K
Focus Adjustment	Fixed Focus	Adjustable Manually	Adjustable Manually
Control on Dome	Digital	Digital	Digital
Light Field Diameter	200mm	150mm or more	150mm or more
Input Voltage		AC 220-230V/50-60Hz	

Minimum standard height 10ft



Video System



Video System

The camera system can be operated with integrated OR system. Digital Image data is recorded in Digital Video Recorder (DVR).

Camera Specification

Image Sensor	1.4".Color Super HAD CCD
Total Pixels	811(H)x580(V)
Resolution	520 TV Lines
Lens	30x Optical,16x digital Zoom
Focal Length(MM)	f=3 to 99.0mm
Focus	Auto/Manual
Signal/Noise Ratio	52dB
Power Consumption	3W:Normal,5W:Maximum
Power Source	DC-12V

Cameras available on third arm/ seprate arm/ depending upon configuration

DVR Specification

1. Video (H.264) / Audio (ADPCM).
2. Upto 4 inch audio inputs & 1 inch audio output.
3. Combined BNC and VGA video output for main display.
4. SATA 1 / FHDD support (Internal Max. HDDx1).
5. HDD & DVD SATA interface
6. Built in web viewer.



Multi LED Series

LED SERIES MODEL - B4

Sterilizable Handle
To move the dome in all directions.

Digital Control Panel

Suspension Arm
To fit any room configuration,
Experience full-range maneuverability



Led Light
Combination of Yellow & White LED's

Sterilizable Handle
To move the dome in all directions
To move the dome in all directions
and also for focus adjustment

Suspension Arm
To fit any room configuration,
Experience full-range maneuverability

LED SERIES MODEL - B3

Led Light
Combination of Yellow & White LED's

Digital Control Panel
To adjust the lux intensity
& colour temperature of light

LED B4 & LED B3 Control Keypad



1. ON/OFF
2. Adjustment for white LED's
3. Adjustment for yellow LED's
4. Memory 1
5. Memory 2
6. Memory 3
7. Endoscopy Mode

Minimum standard height 10ft



Multi LED Series

Minimum standard height 10ft



LED SERIES
MODEL - B4



LED SERIES
MODEL - B3



LED SERIES
MODEL - B4

MODEL - B4 + B3 + B4

Constant Depth
Sterilizable Handle
Focus Adjustment
"ENDO" Mode

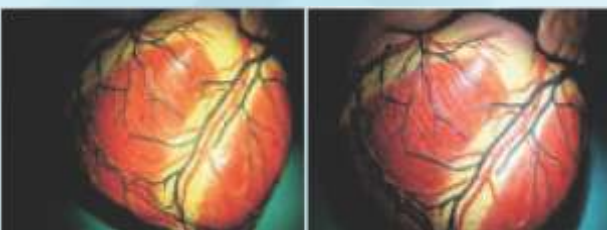
Integrated with laminar flow
Colour Temperature Adjustable
Shadow Free Light



Sterilizable Handle



"ENDO" Mode



3500° K - 6200° K



Integrated with laminar flow



Shadow Free Light



Multi LED Series

MODEL - B4



MODEL - B3



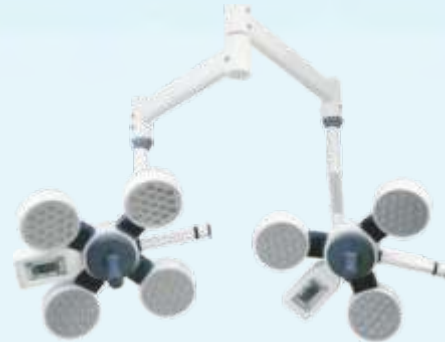
MODEL - B3 + B3



MODEL - B4 + B4



MODEL - B4 + B3



Technical Data

Model No.	LED B4	LED B3
Max Light Intensity at 1m(Lux)	120,000	90,000
No. of LED's	76	57
LED's Life Time	>40,000	>40,000
Dome Diameter	580mm	580mm
Colour Rendering Index(RA)	>96	>96
Temp. Increase @ Head Area	2C	2C
Colour Temperature in Kelvin	3500-6200K	3500-6200K
Focus Adjustment	Adjustable Manually	Adjustable Manually
Control on Dome	Digital	Digital
Light Field Diameter	150mm or more	150mm or more
Endoscopy Mode	Available	Available
Input Voltage	AC 220-230V/50-60Hz	AC 220-230V/50-60Hz

Minimum standard height 10ft



LED Spot Light Series



LED 3

MODEL - LED 3

Specification

Dome diameter is 4" (aluminum dome)
 Dome have 3 Led (life of Led is 50000 hours), Germany Osram Led
 Italian Lenses using for best output focusing
 Focus Diameter is 5" from 1 meter distance
 Lux 3000 minimum to 30000 + maximum (Intensity control function)
 We are using two colour Led for Natural light

MODEL - LED 7

7LED Monitor OT LIGHT 21W

Specification

65,000-70,000 lux power
 7 led bulb
 Multicolor LED
 Aluminium Dome
 Intensity control function
 Height adjustable function
 SS pipe and SS modular base



LED 7



LED 15

MODEL - LED 15

Specification

Intensity: 50000-60000
LED Light: 40,000 hours
Field Diameter: 200mm
Input Voltage: AC 220-230v / 50-60Hz
Focus Adjustment: Fixed
No.Of LED: 15 LED
Dome Diameter: 80mm
Temperature: 2degree
Color temperature: 4900K



LED Spot Light Series

MODEL - HEXA 30 MOBILE LIGHT

Specification

Light intensity: 30000 Lux - 160000 Lux

Dome Size: 700mm

LED life Span: 50000 hours

Balance arm rotate up and down: up 40°,
down: 40°degree

Light body rotate around light arm: 180°

Facula Diameter: 10-280mm

Bulb Power: 32V LED Used 5W

Illumination Depth: 700mm

Handle: Sterilizable Handle

Light intensity at a distance of 1m(1x): 10 set

Color temperature (K): 5000 ± 10%

Color rendering index Ra: 96

Color rendering R9: 96

Luminous efficacy(1m/W): 130/W

No. LEDs: Single Dome - 30 LEDs

Light field adjustable-freely.

Zero IR and Zero UV radiation

Light intensity adjustment: 10 Step

Parabolic design with shadow - free lighting [Lens System] [Multiple Reflector]

Closed system with smooth surfaces that can be sterilized by cleaning agents.

Made from fiber dome / Aluminium

Back up battery working capacity: 2-3 hours

Light control: adjustable the luminance according to 10 grade

Max head height: 2.00m



LED EXAMINATION LIGHT (WALL MOUNTED)



**MODEL -
LED W 005**
Wall Mounted Model

Technical Data

Arm:	Articulated, spring loaded arm with on/off switch and incorporated electronic transformer.
Length of Arm:	85cm
Voltage:	230 V.
Fitted with:	LED Lamp
Colour Temperature:	4300K approx.
Lux:	15000lux
Dome:	Polycarbonate



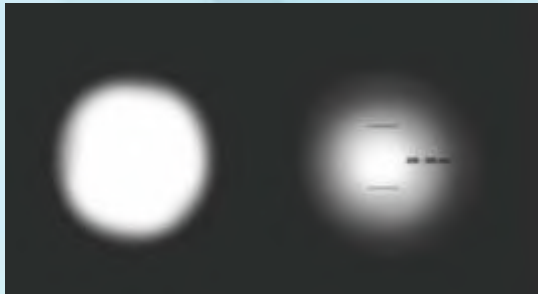
**MODEL -
LED F 004**

Technical Drawing



Euro Series

Beam Formation



Enertech LED light produces high light intensity across the full illuminate area avoiding the variable contrast lighting and distractions, and offers lighting for surface. This creates an ideal depth of illumination, enabling the operator to work without the need to make the readjustment. Traditional Operating Theatre Lights Create a high light intensity by squashing the light flux into the middle of the beam, creating a "Hot Spot". This high contrast 'Hot Spot' gives a very bright centre, leaving the rest of the field relatively dim in-comparison.



Suturing Light For Convenient Post- Operative Procedure

When the lights are turned off, a low intensity radiant beam is emitted so that suturing process can be carried out in great comfort and without time delay.



Remote Control & Sterilizable Handle

Remote Control Adjust: On & Off Switch.

Light Intensity: Increase & Decrease Suturing Mode.



Sterilizable Handle

Euro Series 160 + 140



Technical Data

Illumination Intensity
LED Service Life
Colour Temperature
Colour Rendering Index
Temperature increase in surgeon's head area
Index Light Spot
Brightness Adjustment
Power

Euro 160

1,60,000 Lux
50,000 hours
5500K
95Ra
<2C
210-280mm
Nearly From 0% - 100%
230VAC/50/60Hz



Technical Data

Illumination Intensity
LED Service Life
Colour Temperature
Colour Rendering Index
Temperature increase in surgeon's head area
Index Light Spot
Brightness Adjustment
Power

Euro 140

1,40,000 Lux
50,000 hours
5500K
95Ra
<2C
210-280mm
Nearly From 0% - 100%
230VAC/50/60Hz



Eco Plus Series

Eco Plus Series 140 Configurations



Technical Data	Eco Plus 140
Illumination Intensity	1,40,000 Lux
LED Service Life	50,000 hours
Colour Temperature	5500K
Colour Rendering Index	95Ra
Temperature increase in surgeon's head area	<2C
Index Light Spot	210-280mm
Brightness Adjustment	Nearly From 0% - 100%
Power	230VAC/50/60Hz

Eco Plus Series 100 Configurations



Technical Data	Eco Plus 100
Illumination Intensity	1,00,000 Lux
LED Service Life	50,000 hours
Colour Temperature	5500K
Colour Rendering Index	95Ra
Temperature increase in surgeon's head area	<2C
Index Light Spot	210-280mm
Brightness Adjustment	Nearly From 0% - 100%
Power	230VAC/50/60Hz



Eco Plus 140+ 100



EcoPlus 140 - Mobile

EcoPlus 100 - Mobile





Classic Series

Classic 140

1. Auto Focus.
2. Laminar Air Flow Compatibility.
3. Multi Lens System
4. Shadow Free illumination. Suturing Light for convenient
5. post-operative procedure

Classic 140 + 140

Technical Specification Classic Series

Technical Data	Classic 140
Illumination Intensity	140000 Lux
LED Service Life	50,000 hours
Colour Temperature	5500 K
Colour Rendering Index	95Ra
Temperature increase in surgeon's head area	< 2°C
Index Light Spot	210 - 280 mm
Brightness Adjustment	Nearly From 0% - 100%
Power	230VAC/50/60Hz

(*Note : Specifications are subject to change without prior notice.)

Minimum standard height 10ft

SI Surgical Pvt. Ltd.

(AN ISO : 9001/13485 & CERTIFIED COMPANY)

www.sisurgical.co.in



CONTACT US:

S I Surgical Private Limited

Din No.: 07514445

Phone No.:

+91-033-2669-0085(4 Lines)

+91-033-2669-0225

+91-9836296422

E-mail: info@sisurgical.co.in

Sisurgicalcorp@gmail.com

CORPORATE OFFICE:

SIS House, NH6, Uttar Nibra,
2No. Pump House, Opp. Mandirtala
Sporting Club, Howrah - 711409
Kolkata, West Bengal, India

Other Branch: Patna, Bhagalpur, Siliguri, Bhubaneswar, Guwahati, Hyderabad, Chennai,
Mumbai, Balashore, Coochin, Ahmedabad, Jodhpur, Bhiwani, Nairobi, Dhaka,
Columbo, Dar es Salam, Kathmandu, Biratnagar, Hanoi etc

MANUFACTURING UNIT:

Factory Unit I

265 Roy Bahadur Road,
Near Chhatra Sangha Club
New Alipore, Kolkata - 700053

Factory Unit II

Dadri Gate, Kaunt Road,
Shanti Nagar, Bhiwani
Haryana - 127021